

ZERVAS SCHOOL BUILDING COMMITTEE and DESIGN REVIEW COMMITTEE MEETING

Zervas Elementary School – Newton, MA

July 31, 2014



JOSLIN
LESSER
Project Management

Design *partnership*
OF CAMBRIDGE



5.3 Acres (**3.5 Useable**)
35k SF Building

43k SF Play Areas
+ Outdoor Classroom
+ Outdoor Gardens

Plaza/Gathering on Lawn
8+ Bike Storage
Dumpsters/Service

44 Parking Spaces (lined)
1 Bus Drop-Off (lined)
0 Car Drop-Off
(on-site totals listed)

SF Over 100' Setback
5.2k Building
19.8k Paving
25k Total within Setback

SCHEMATIC DESIGN PROGRESS – EXISTING AERIAL

Zervas Elementary School – Newton, MA

July 31, 2014





6.0 Acres (**4.2 Useable**)

78.8k SF Building

60k SF Play Areas

+ Outdoor Classroom

+ Outdoor Gardens

8k SF Plaza/Gathering

36+ Bike Storage

Dumpsters/Service

75 Parking Spaces

4 Bus Drop-Off

20 Car Drop-Off
(added drop-off lane)

SF Over 100' Setback

11.2k Building (vs. 5.2k)

5.4k Paving (vs. 19.8k)

9.2k Pervious

25.8k Total (25k exists)

SCHEMATIC DESIGN PROGRESS – SITE PLAN

Zervas Elementary School – Newton, MA

July 31, 2014

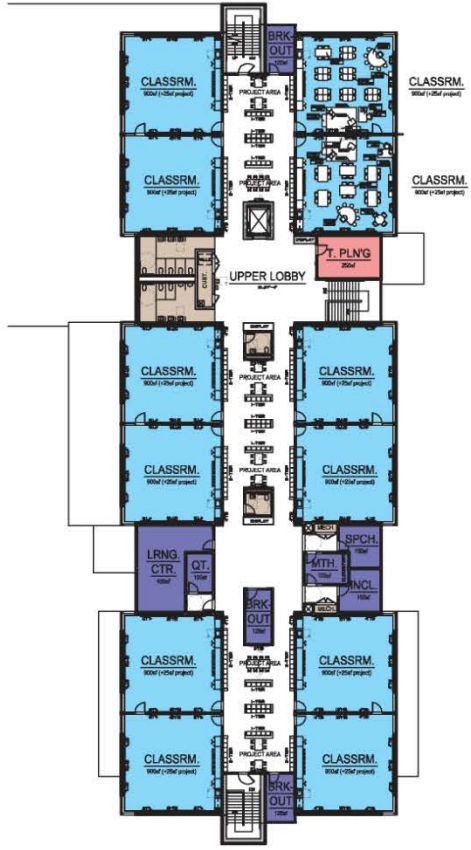




MAIN FLOOR (37,400sf)



2nd (21,500sf)



3rd (19,900sf)

SCHEMATIC DESIGN PROGRESS – FLOOR PLANS

Zervas Elementary School – Newton, MA

July 31, 2014



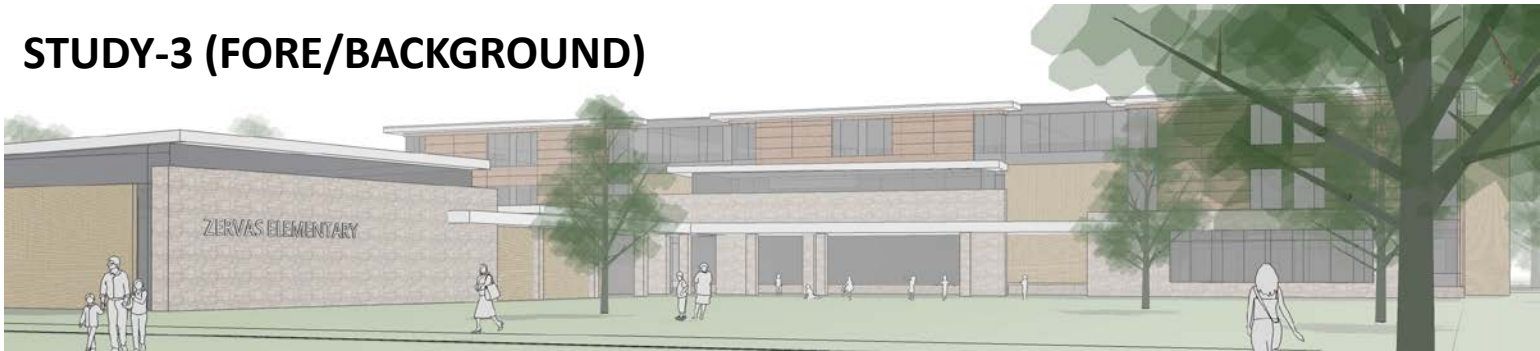
STUDY-1 (EXTRUDED PIERS)



STUDY-2 (FADED UPPER)



STUDY-3 (FORE/BACKGROUND)



SCHEMATIC DESIGN PROGRESS – ELEVATION STUDIES

Zervas Elementary School – Newton, MA

July 31, 2014



VIEW FROM BEACON/BEETHOVEN INTERSECTION



SCHEMATIC DESIGN PROGRESS – PRELIMINARY ELEVATIONS

Zervas Elementary School – Newton, MA

July 31, 2014



VIEW FROM BEACON/BEETHOVEN INTERSECTION



SCHEMATIC DESIGN PROGRESS – PRELIMINARY ELEVATIONS

Zervas Elementary School – Newton, MA

July 31, 2014



VIEW FROM BEACON/BEETHOVEN INTERSECTION



SCHEMATIC DESIGN PROGRESS – PRELIMINARY ELEVATIONS

Zervas Elementary School – Newton, MA

July 31, 2014



VIEW FROM BEETHOVEN TOWARD BEACON



SCHEMATIC DESIGN PROGRESS – PRELIMINARY ELEVATIONS

Zervas Elementary School – Newton, MA

July 31, 2014

