

# Zervas Elementary School

100% Design Development Update



Board of Aldermen and School Committee Meeting  
April 6, 2015



## Recent Meetings & Project Updates

- Feb. 5th DRC - Review of DD Progress
- Feb. 6th P&R - Review of DD Progress
- Feb. 12th ZWG - Review of DD Progress
- Feb. 12th NPS - Plan/Program Meeting
- Feb. 13th Safety/Security Meeting
- Feb. 24th ZSBC/DRC - 50% DD Update
- Mar. 4th DRC - Review of DD Progress
- Mar. 12th NPS - Site Design Meeting
- Mar. 17th Cost Reconciliation Meeting
- Mar. 19th Con-Comm - NOI Approval
- Mar. 25th NPS/P&R – Playground Equipment
- Mar. 25th DRC - Review of DD Progress

# Upcoming Milestones & Project Updates

- Apr 2015 100% DD Update: ZWG / DRC / BOA / SC / ZSBC
- Apr 2015 Begin Construction Documents
- Jun 2015 Early Bid Package 1
- July 2015 60% CD Estimate
- Oct 2015 CD Update: ZWG / DRC / BOA / SC / ZSBC
- Oct 2015 Early Bid Package 2
- Dec 2015 Zervas Faculty and Students Move to Swing Space
- Dec 2015 Bidding Main Package
- Jan 2016 Construction Begins on Early Package at Zervas
- **Feb 2016 Execute GMP Construction Contract**
- **Sep 2017 New Zervas School Opens for Students**



# Bird's Eye View of North - West Face





# Site and Buffers





## View Toward South (Through Wetlands)



# Site Development

## LEGEND

1. Entrance Plaza
2. Playable Landforms
3. Rain Gardens
4. Outdoor Classrooms
5. K-1 Play
6. U6 Soccer Field
7. U10 Soccer Field
8. 2-3 Play Ground
9. Basketball Hoop
10. Fence
11. Memorial Garden
12. 4-5 Play Area
13. Seat Wall
14. Bike Racks
15. Life Trail Connection



BEETHOVEN AVENUE

## ZERVAS ELEMENTARY SCHOOL:

## MASTER PLAN

BIRCHWOOD  
DESIGN GROUP



# Site Development

## LEGEND

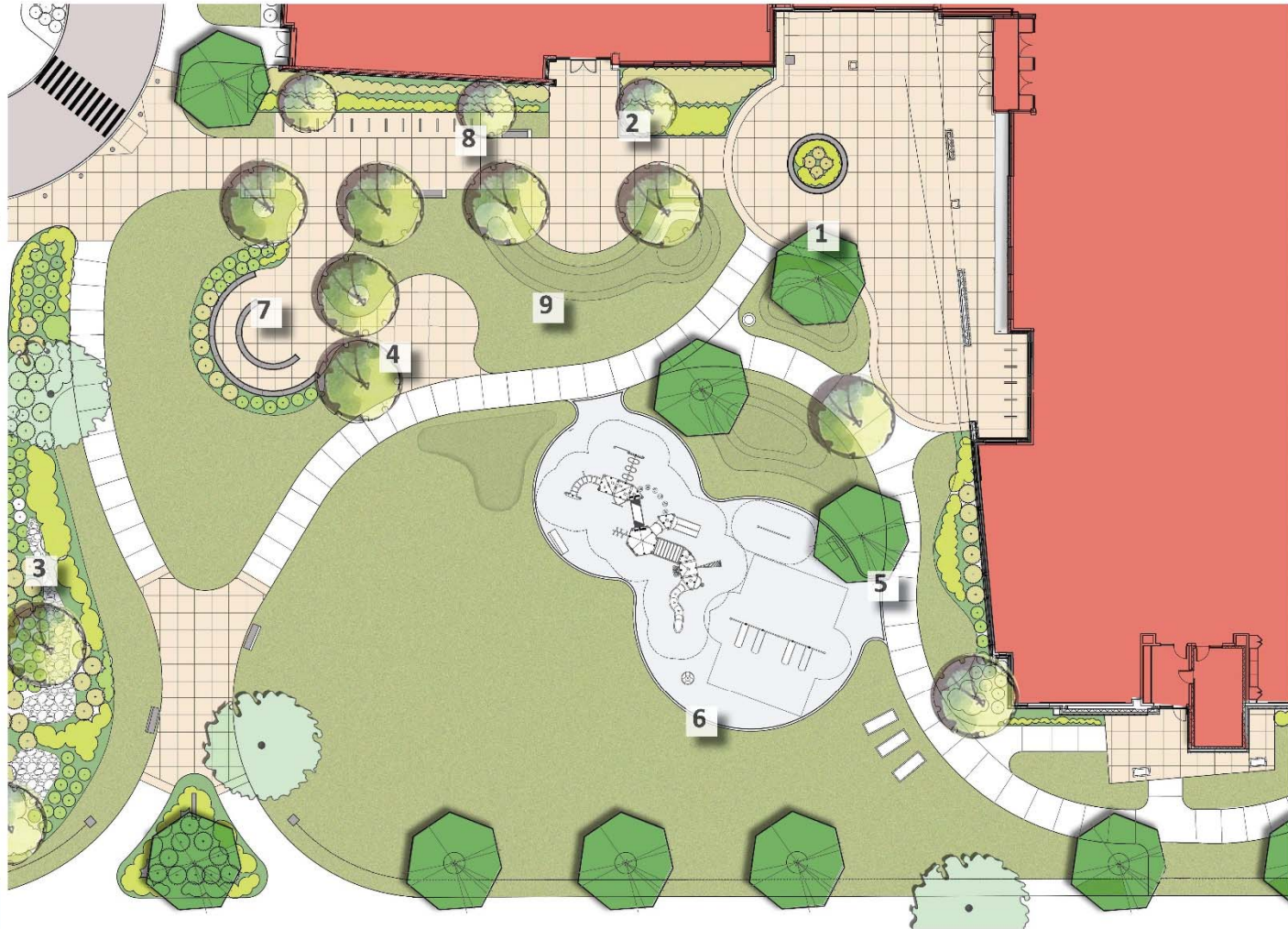
1. Entrance Plaza
2. Garden Areas
3. Rain Gardens
4. Outdoor Classrooms
5. Memorial Stone
6. K-1 Play Area
7. Tiered Seat Walls (seats 25)
8. Bike Racks
9. Playable Landforms



Playable Landforms



No-Mow Grass



**ZERVAS ELEMENTARY SCHOOL:**

Revised Entrance Plaza

BIRCHWOOD  
DESIGN GROUP



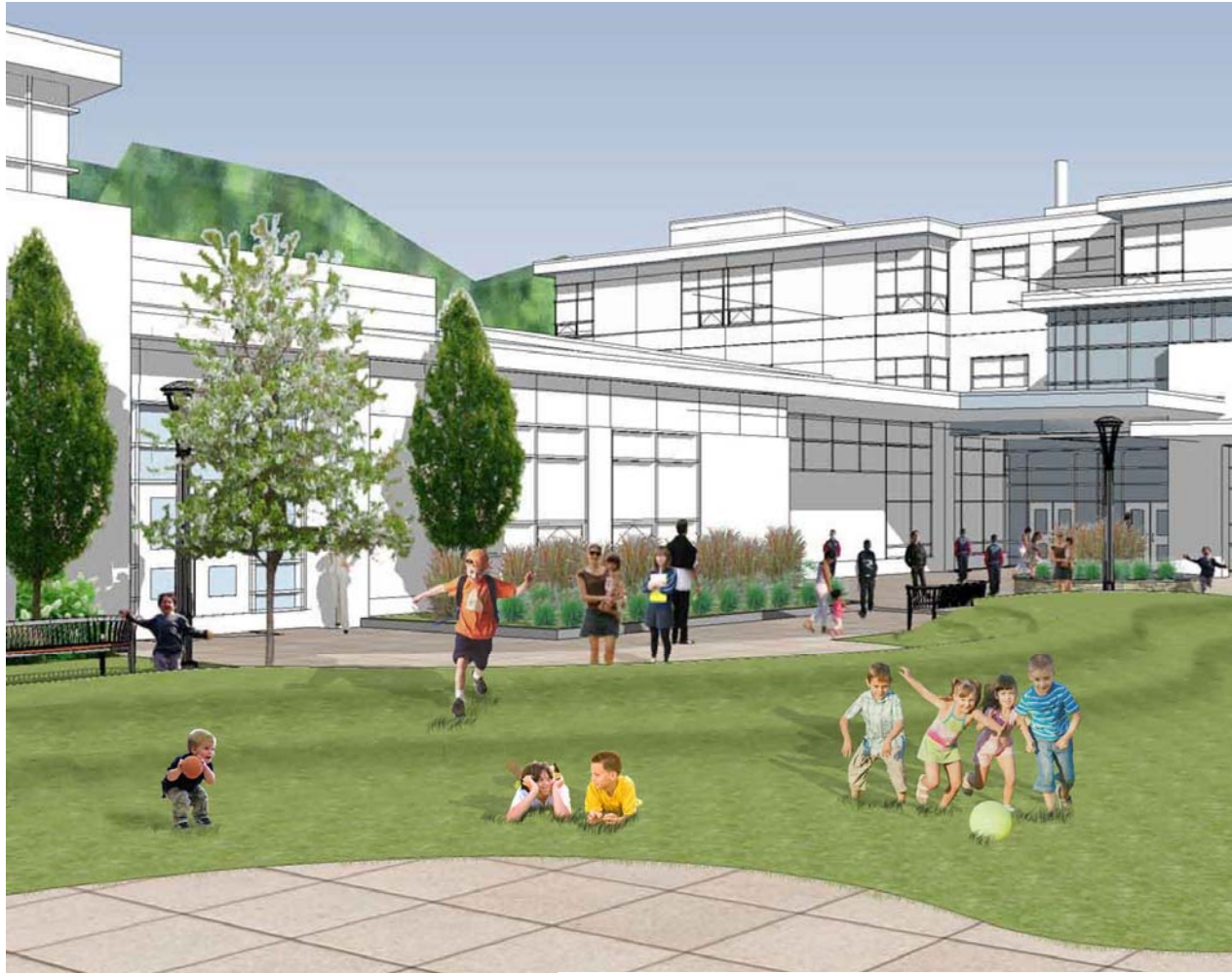
# Site Development



**ZERVAS ELEMENTARY SCHOOL:**

**PERSPECTIVES**

# Site Development

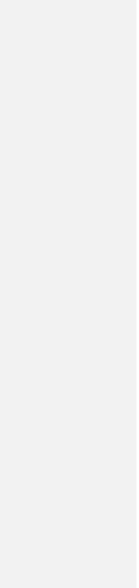
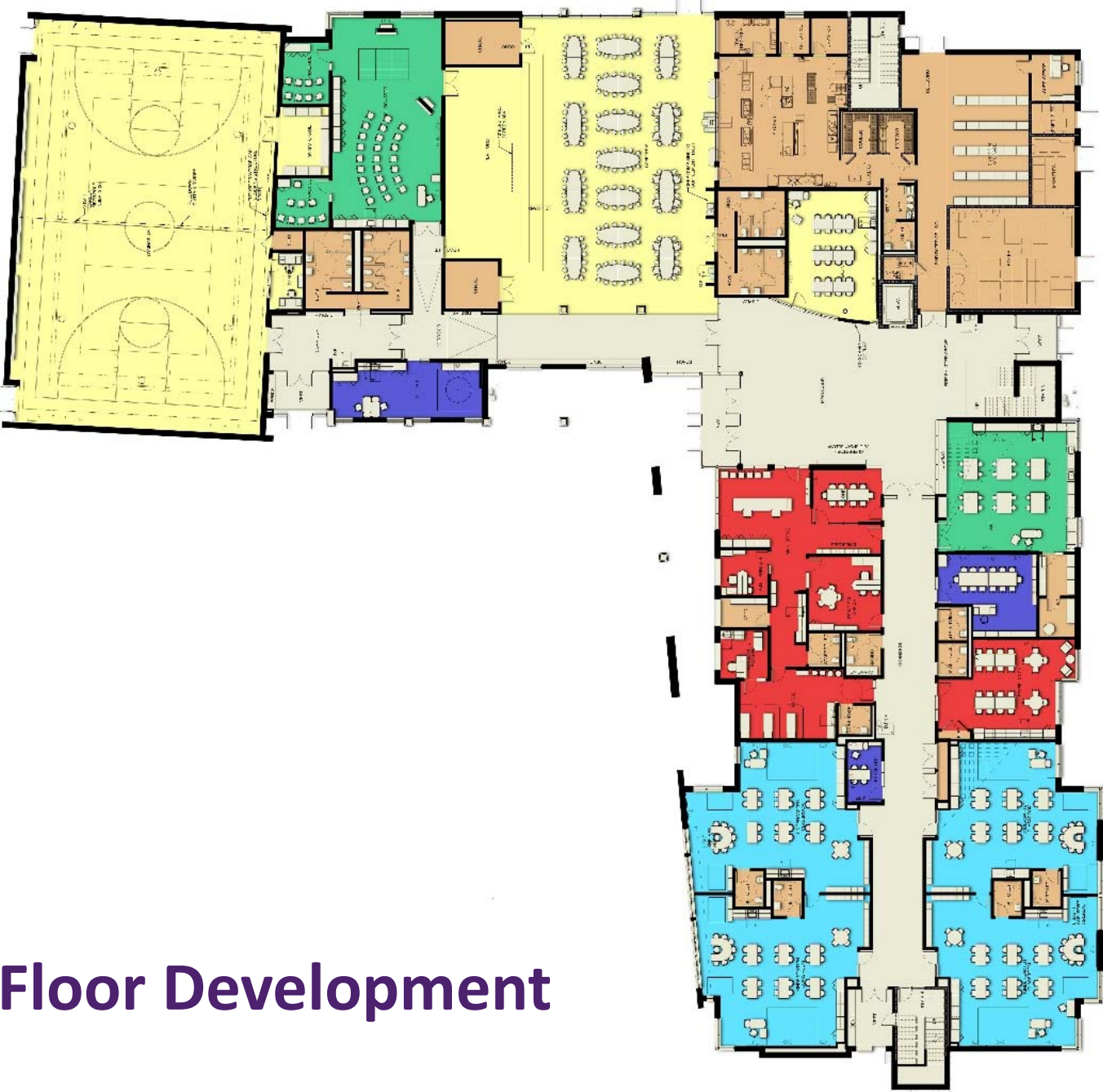


**ZERVAS ELEMENTARY SCHOOL:**

**PERSPECTIVES**



# Main Floor Development



# Mid and Upper Floor Development

