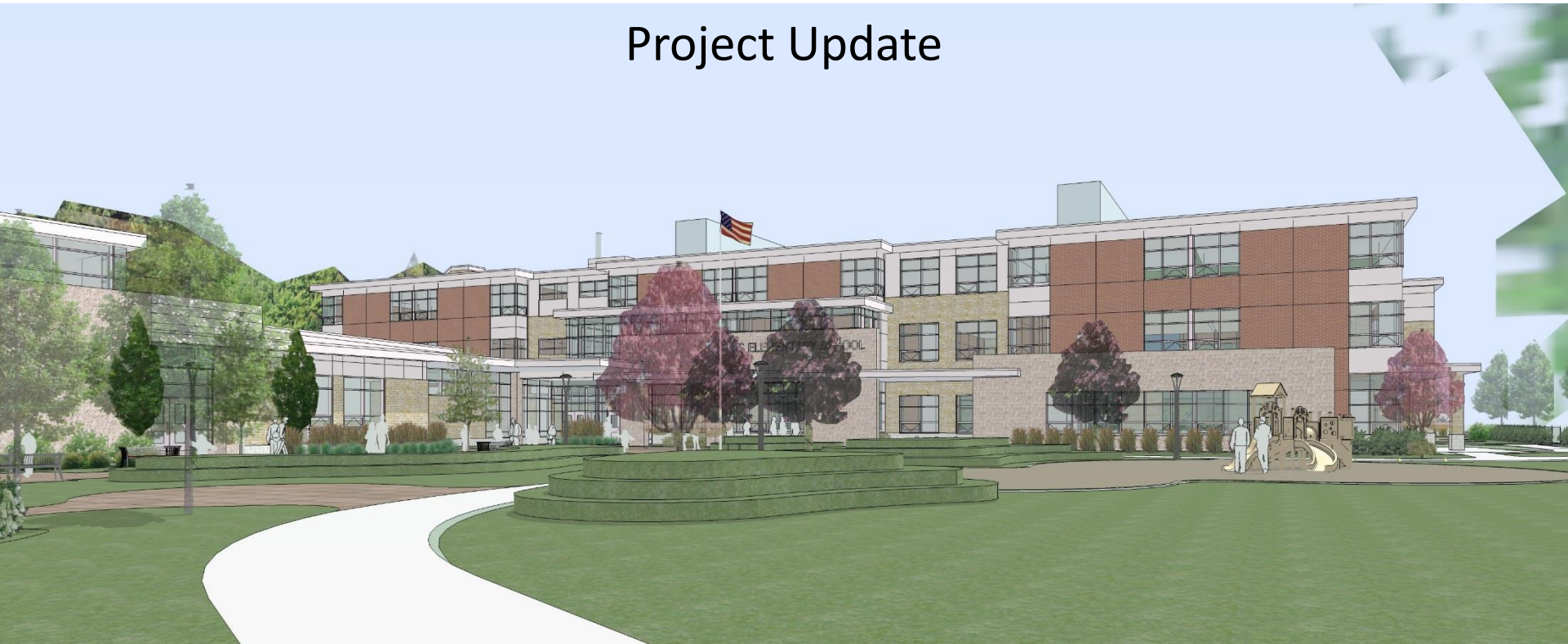


# Zervas Elementary School

## Project Update



Zervas School Building Committee & Design Review Committee Meeting  
June 23, 2016



Perkins Eastman | *DPC*



# Project Update Traffic Study



# Project Update– Site Plan

Perkins Eastman | *DPC*



# Project Update Traffic Study

## Intersection Reconstruction:

- New traffic signal equipment
- New pedestrian ramps
- Exclusive pedestrian phase
- Peak period traffic signal timing
- “No Turn on Red” for all approaches



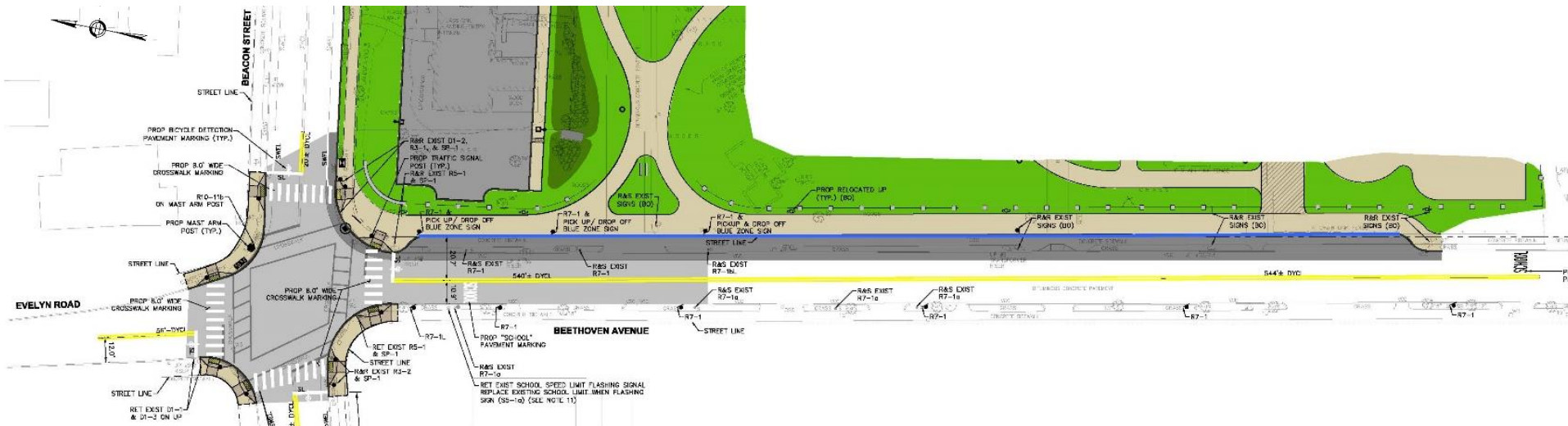
# Project Update Traffic Study

## Transportation Goals:

- Manage vehicle congestion on Beethoven Avenue
- Minimize delay at intersection of Beacon Street/Beethoven Avenue/Evelyn Road
- Increase pedestrian accessibility within study area
- Facilitate student drop-off and pick-up
- Provide emergency vehicle access to Beethoven Avenue during drop-off and pick-up

## Option 1: Continuous bump-in “Blue Zone” to intersection

- Appx. 450 feet/20 passenger car storage
- Single-lane Beethoven Avenue northbound approach to intersection
- Potential discharge of “Blue Zone” proximate to intersection



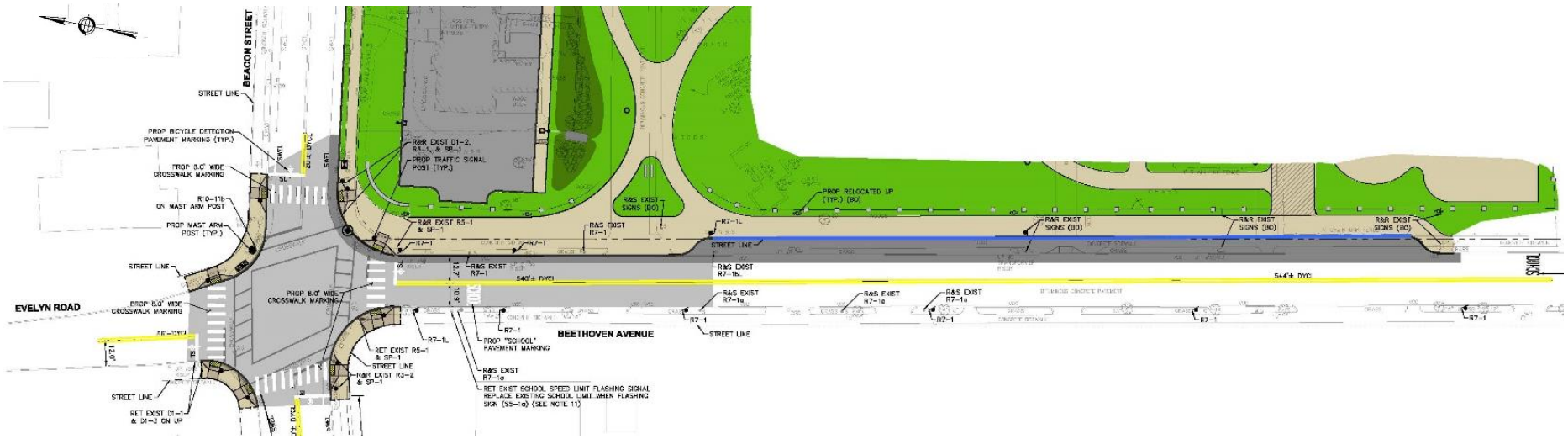
# Project Update Traffic Study

## Transportation Goals:

- Manage vehicle congestion on Beethoven Avenue
- Minimize delay at intersection of Beacon Street/Beethoven Avenue/Evelyn Road
- Increase pedestrian accessibility within study area
- Facilitate student drop-off and pick-up
- Provide emergency vehicle access to Beethoven Avenue during drop-off and pick-up

## Option 2: Continuous bump-in “Blue Zone”, shy of intersection

- Appx. 325 feet/15 passenger car storage
- Potential improved vehicle traffic flow to intersection compared to Option 1
- Single-lane Beethoven Avenue northbound approach to intersection



# Project Update Traffic Study

## Transportation Goals:

- Manage vehicle congestion on Beethoven Avenue
- Minimize delay at intersection of Beacon Street/Beethoven Avenue/Evelyn Road
- Increase pedestrian accessibility within study area
- Facilitate student drop-off and pick-up
- Provide emergency vehicle access to Beethoven Avenue during drop-off and pick-up

## Option: Bump-In “Blue Zone”, Exclusive Right-Turn Lane, “Bump-Out” separator

- Separation of intersection and “Blue Zone” operations
- Same “Blue Zone” vehicle storage as Option 2; less than Option 1
- Right-Turn Lane appx. 100 feet/5 passenger car storage; No Turn on Red
- Improved traffic flow through intersection compared to Option 1 & Option 2
- Pedestrian crossing across Beethoven wider than Option 1 & Option 2

